



FUTURE

— IS HERE

Pride
Prime

ABOUT US

Founded in Year 2010, with a small step in local area-Bavaliary village, which is one of the village from 22 Villages of DHOLERA SIR, District-Ahmedabad, Gujarat. In year 2019 we came with the name of RSC REALTY which is a leading Real Estate developer in DHOLERA with its projects inside and outside DHOLERA SIR.

RSC REALTY is most Reliable, Trusted brand of Dholera.

We offer Residential, Commercial and Industrial land projects as well as plot and villa with all facilities and amenities.

We help our clients with safe investments with high returns and grow their investments through strategic investment.

We strongly believe in our core values and focus on our mission to give satisfactory results to clients from their investment.

"THINK NOW, INVEST TODAY AND SECURE YOUR FUTURE"

ABOUT DHOLERA SIR

Dholera Special Investment Region(DSIR) is a Greenfield industrial city planned & located approximately 100 k.m. south-west of Ahmedabad. Dholera spans an area of 920 Sq. km. & the total SIR will be completed in the next two decades. The 920 sq km of the Dholera Industrial City area has a total developable area of about 580 sqkm since one third of the area falls within the Coastal Regulation Zone(CRZ). Out of the 580 Sq km the prime agriculture land has been preserved and total area of about 422 Sq km has been set for urban development, which has been translated into 6 town-planning schemes and 27 Sub-tp will be developed.

You don't have to wait as long as 2042 for settled Inside Dholera SIR as 6 TPS will be ready. Linear development plan area of about 137 Sq km will be ready in one decade which is called Ahmedabad - Dholera Expressway.

Dholera SIR will be a role model for future cities in India. DMIC-The Vision And Plan Delhi-Mumbai Industrial Corridor (DMIC) is India's most ambitious infrastructure program, Aiming to develop new industrial cities as **"Smart Cities"**. DMIC will emerge as a **"Global Manufacturing and Trading Hub"** over the next few years

MEGA PROJECTS IN DHOLERA SIR



DHOLERA INTERNATIONAL AIRPORT



ABCD BUILDING



**250 M WIDE 6 LANE EXPRESS HIGHWAY
AHMEDABAD-DHOLERA**



TATA SEMICONDUCTOR



**RENEW POWER - 5000MW SOLAR CELL
1200 CR CONSTRUCTION COST**



**GREEN FIELD
INDUSTRIAL PARK**



**WORLD'S LARGEST
SOLAR PARK (5000 MW)**



**MONO RAIL CONNECTIVITY
AHMEDABAD-DHOLERA**

WHY CHOOSE US?

- ☐ PRIME & STRATEGIC LOCATION
- ☐ SITE VISIT ASSISTANCE 365 DAYS
- ☐ STANDARD OF EXCELLENCE
- ☐ NA, NOC, TITLE CLEAR PROJECT WITH PLAN-PASS
- ☐ IMMEDIATE SALEDEED REGISTRATION
- ☐ EXPERIENCE WORKFORCE
- ☐ EMI OPTION AVAILABLE
- ☐ 100% TRANSPARENCY



MR. RAMRAJSINH CHUDASAMA
Director (Army RTD)

CORE MANAGEMENT

He served in the most prestigious and disciplinary organisation Indian Army. He is the founder and CEO of RSC Group of Companies including "RSC Realty, RSC Buildcon Pvt. Ltd., Dholera Triangle Infra Pvt. Ltd., RSC Enterprise, RSC Security". He is a result-oriented, Strategic Real Estate Expert. He firmly believes in the philosophy of infusing "**Growth with Integrity**"

FEATURES & AMENITIES



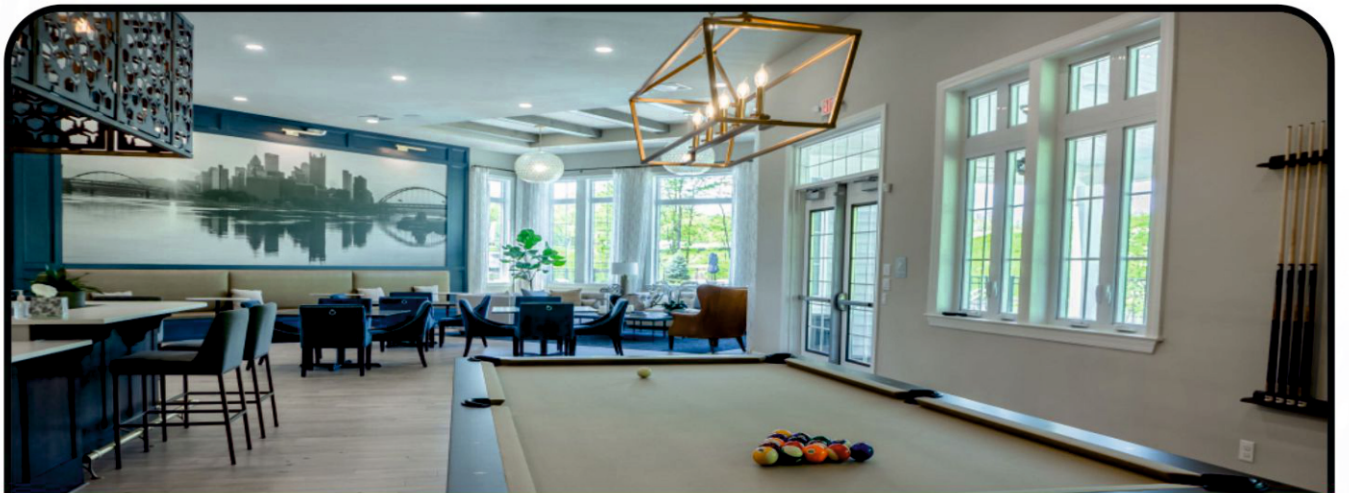
CHILDREN PLAY AREA



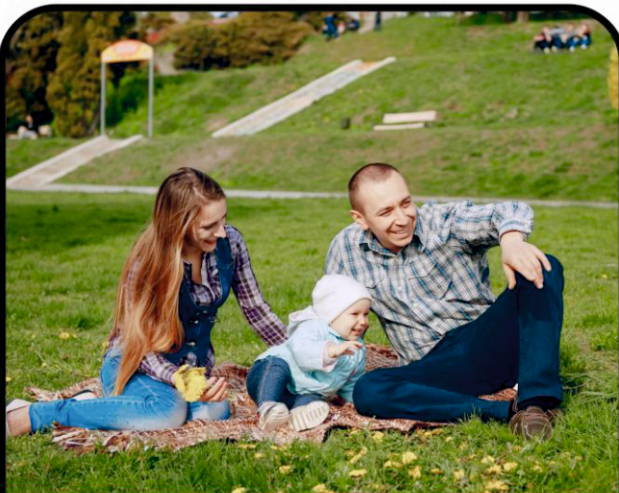
KIDS SWIMMING POOL



TEMPLE



CLUB HOUSE



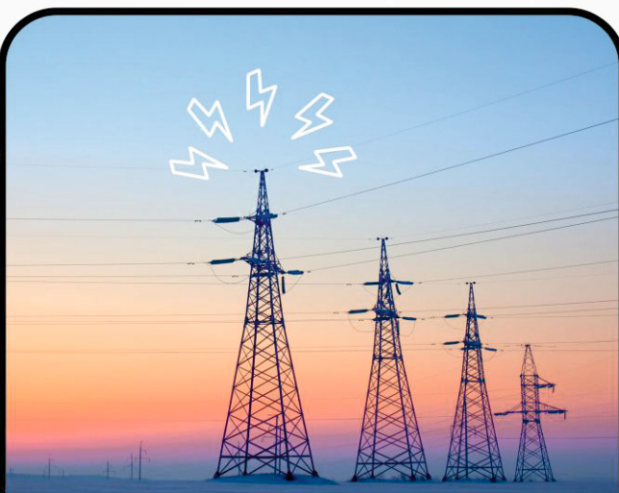
LANDSCAPING GARDEN



24/7 SECURITY



WATER CONNECTION



24/7 ELECTRICITY



INTERNAL ROAD



PROJECT BOUNDARY

FUTURE — IS HERE —

Pride *Prime*

- * Developers/Society/Associations Reserves all the right to make changes in the term and conditions, rule and regulations as well as in the lay out plan.
- * This Leaflet/Brochure & Layout plan is not a part of any legal document and is meant for information / graphical presentation only.
- * all plot dimensions are in Square Yards.

LOCATION ADVANTAGE

PROJECT LOCATED IN AHMEDABAD-DHOLERA MDR ROAD

IN THE VICINITY OF DHOLERA SIR

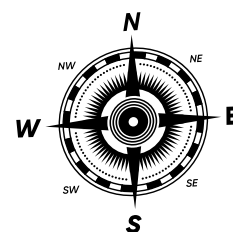
JUST 9 MINUTES FROM ABCD BUILDING

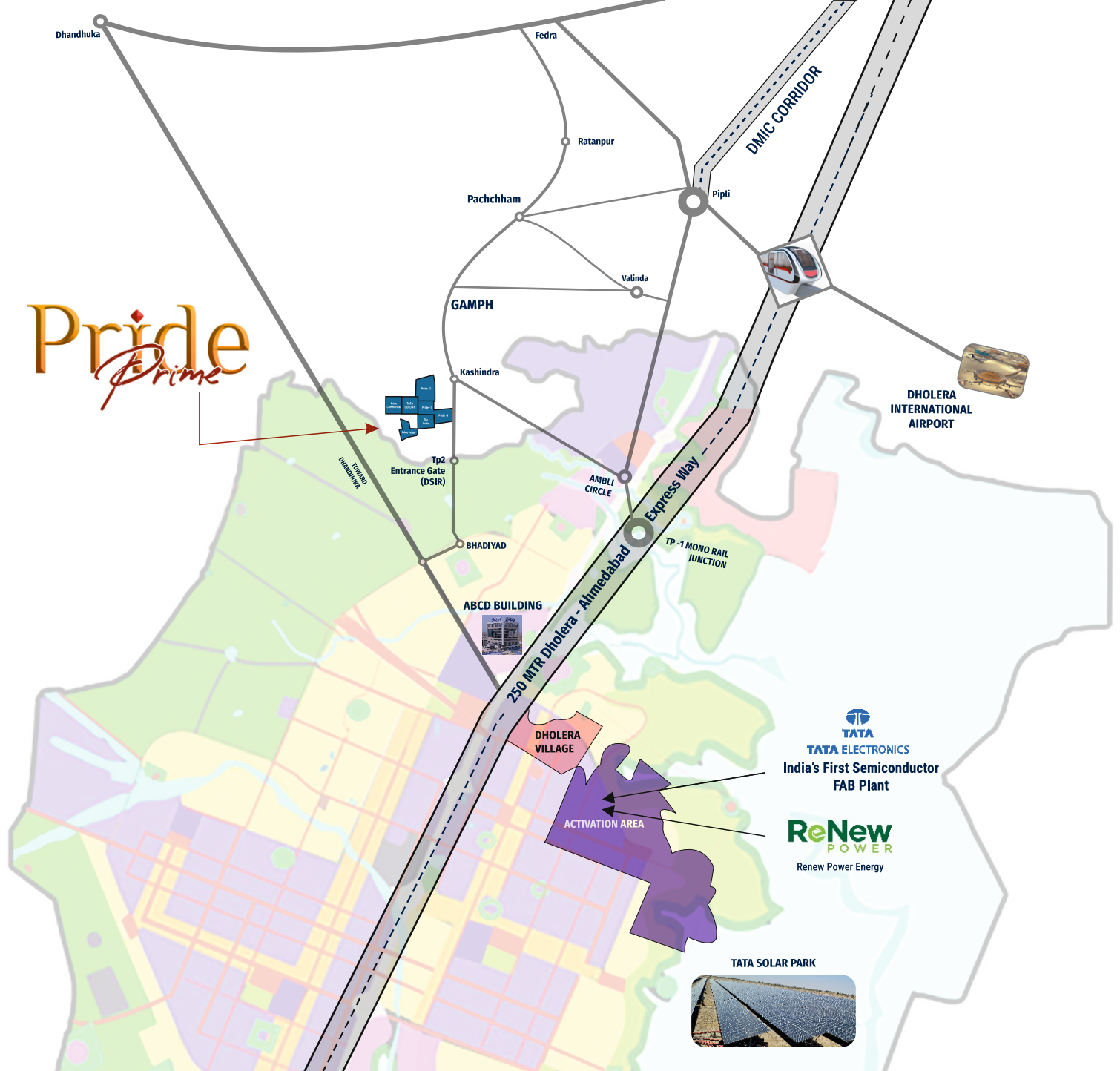
NEAR TO KNOWLEDGE & IT ZONE

AT ENTRANCE OF DSIR (TP2 ENTRANCE)

VERY NEAR TO ACTIVATION AREA

PROJECT LOCATED IN THE LAP OF NATURE





-: DHOLERA OFFICE :-

The Pride
Kasindra MDR Road,
Kasindra, Dholera,
Ahmedabad - 382465, Gujarat (India)

-: CORPORATE OFFICE :-

904, 9th Floor,
Signature-1, Opp. Andaz Party Plot,
Nr. Adani Gas Pump, S.G. Highway, Makarba,
Ahmedabad - 380 051, Gujarat, INDIA.

+91 9408 106 106
+91 90819 59959

www.rscgroupdholera.in

